



**1. SANDSTONE WALLS**

Throughout the Peace Park and around The Great Stupa you will notice many sandstone walls. The sandstone comes from a quarry at Campbell's Creek.



**8. NEPALESE HINDU TEMPLE**

Members of the Victorian Nepalese community are creating a traditional Nepalese temple with a statue of the Hindu deity Ganesh inside.



**2. STONE LANTERNS**

Hand carved from Vietnamese stone in the shape of pagoda lanterns, these beautiful lights line the main path to The Great Stupa. They will be lit for special events.



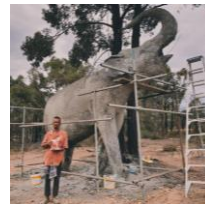
**9. KWAN YIN GROTTO**

A statue of Quan Yin, the female Buddha of compassion will stand on the pedestal in the centre of the pond. The statue is currently in construction. It will be 7 meters tall and made from poly marble.



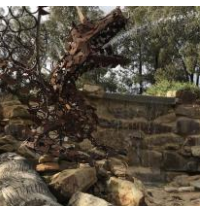
**3. BODHI "BOH-DEE" TREES**

The Buddha attained enlightenment after meditating under a Bodhi tree. Our trees come from cuttings of that original tree, which were brought to Australia by His Holiness the Dalai Lama.



**10. FOUR HARMONIOUS FRIENDS**

This life-size statue of the four brothers represents an important Buddhist teaching of working together harmoniously. It has been made by a sculptor from Thailand named Joy.



**4. TUMMO WATERFALL**

Our large waterfall features "Tummo", a dragon sculpture specially made for The Great Stupa by Melbourne artist Sian Diamond. Tummo's name is Tibetan for 'inner fire'.



**11. MEMORIAL WALLS AND TREES**

Memorial walls around The Great Stupa hold the ashes of loved ones. The ashes are sealed with bronze plaques. Trees around The Great Stupa are also available for memorials.



**5. ST FRANCIS OF ASSISI**

St Francis was offered by the Catholic Diocese of Sandhurst. He was blessed by Bishop Les Tomlinson in May 2018. Afterwards Lama Zopa Rinpoche spoke of the miracles of St Francis.



**12. ELEPHANTS**

Offered by Lama Zopa Rinpoche, these elephants are making offerings to The Great Stupa. In Buddhism, with control, elephants have the power to do amazing work; just like our minds.



**6. GOLDEN THAI BUDDHA**

This Buddha statue is made from fiberglass in Thailand and was offered to the Stupa by a benefactor. The Buddha's eyes have been painted by a Tibetan artist.



**13. TIBETAN SNOW LIONS**

The Snow Lions are the guardians of The Great Stupa. They have been carved from marble in Vietnam and painted in the traditional Tibetan style by Lobsang Konchok.



**7. GARDENS**

We began planting our gardens in 2013. Plants were chosen that would do well in the local environment and offer a mix of flowers, lush foliage, autumn colour and summer shade.



**14. PRAYER WHEELS**

Hand crafted in Nepal from copper, each wheel has the mantra 'OM MANI PADME HUM' in Tibetan. Over 200 of these wheels will surround The Great Stupa, which are available to sponsor.



**PLEASE RETURN HANDOUT TO EXHIBITION CENTRE**